



OPENING
A BOX OF
OPPORTUNITIES
FOR A BRIGHTER
FUTURE

What is APELA?

A systematic process that involves the identification, documentation and assessment of prior experiential learning to determine the extent to which an individual has achieved the desired learning outcomes, for access to a programme of study and/or award of credits

Who is eligible for APEL.A?

A photograph of a man in a light green button-down shirt, raising his right hand with a pen in his fingers, as if participating in a class or meeting. In the background, another man is partially visible, looking towards the camera. The image is partially covered by a blue geometric overlay on the right side.

Target Group for APEL.A

- Individuals with work experience but lack formal academic qualifications to pursue studies at HEP
- Malaysian citizens and expatriates (including family members) seeking recognition for their prior learning.
- APEL is used for admission to programmes of study (gain entry to tertiary education)
- APEL does not guarantee automatic admission (Applicants must still fulfill the requirements by the HEP).

Differences Between APEL.A and APEL.C

ACADEMIC QUALIFICATION

Conventional formal learning track

Module...n

Module 5

Module 4

Module 3

Module 2

Module 1

APEL. A

1. Using prior experiential learning to gain entry into formal academic programmes.
2. Malaysian citizens with work experience, but lack formal academic qualifications can apply APEL. A for admission into MMU.

Conventional formal learning track
with APEL.C

Module...n

Module 3

Module 2

Module 1

APEL. C:
up to 30% credits
in the programmes

APEL. C

1. The award of credits for prior experiential learning towards a course in an accredited programme for registered students (Local & International).
2. The prior experiential learning will be assessed for credit recognition by the faculties.

Eligibility for APEL.A (Admission)

Bachelor

- >21 years old above
- Possess relevant work experience/Prior Experiential Learning + Pass APEL Assessment



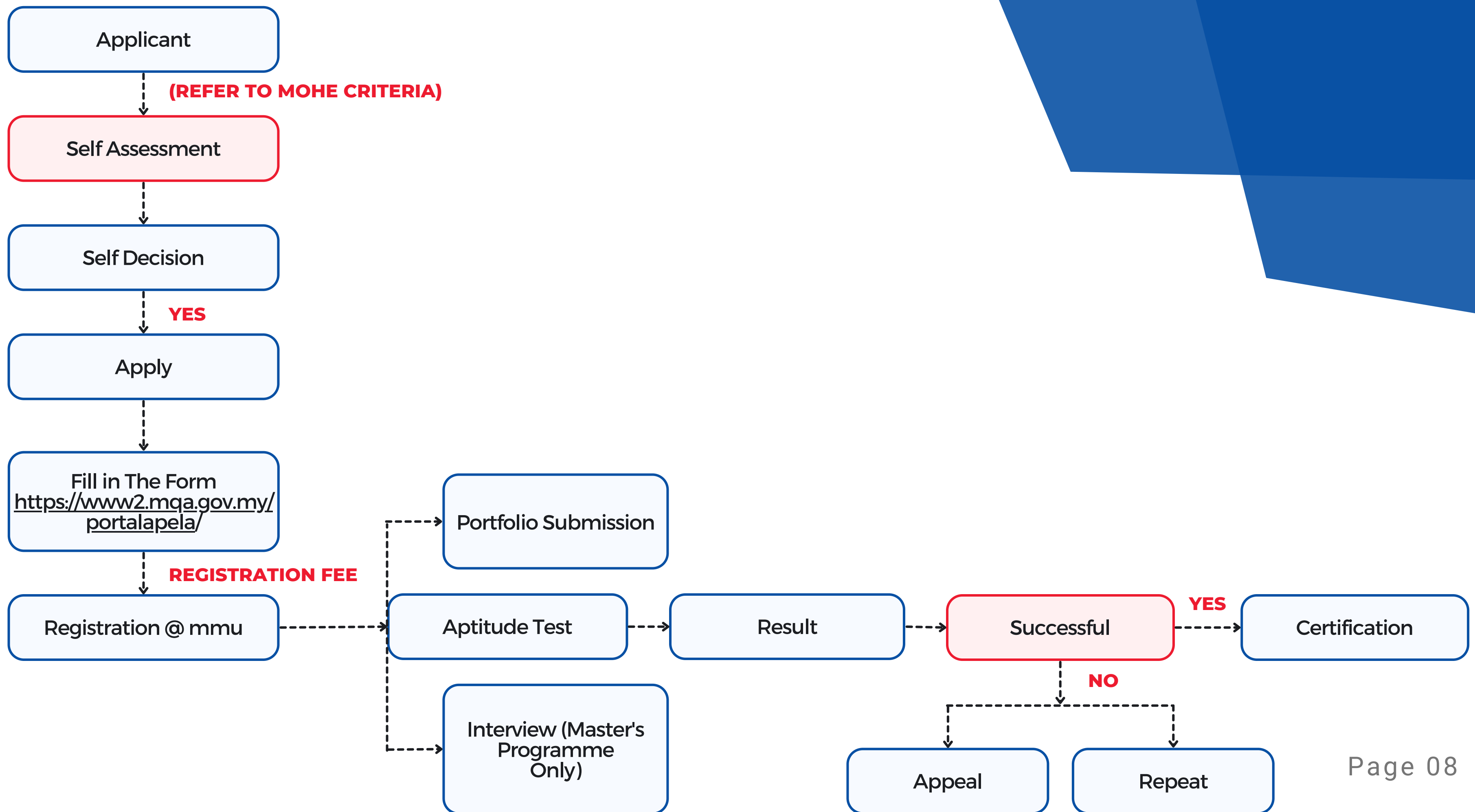
Eligibility for APEL.A (Admission)

Master

- >30 years old above
- STPM/Diploma/A-Level & Equivalent
- Possess relevant work experience /Prior Experiential Learning + Pass APEL Assessment



APEL.A Application Process



APEL.A Assessment

The APEL.A assessment comprises of the following:

- Aptitude Test
- Portfolio
- Interview (only for T7 (Master's) level)



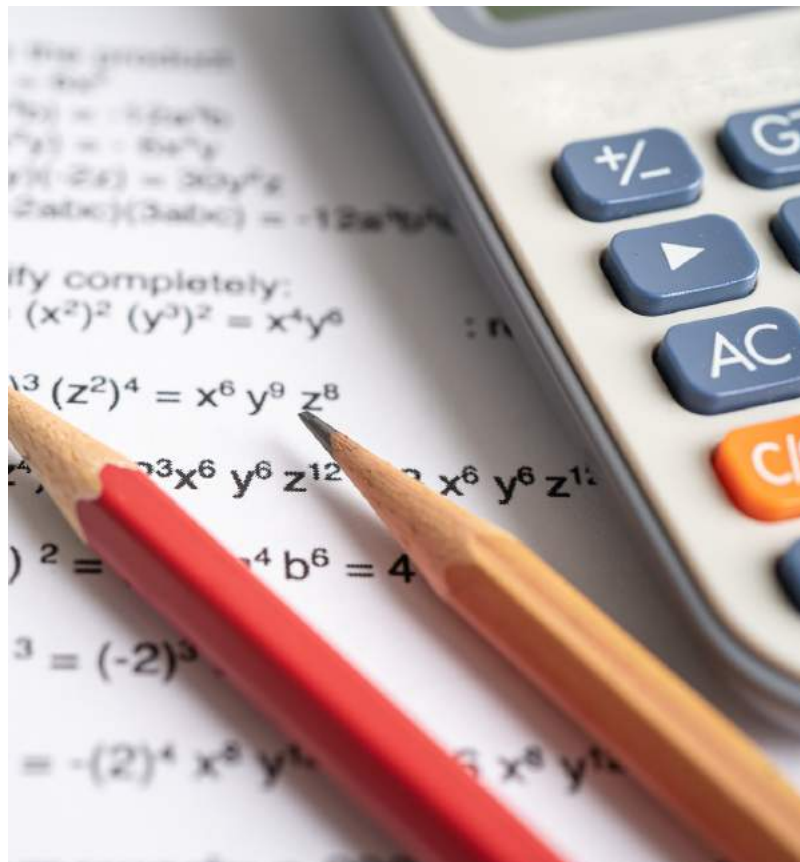
Aptitude Test

The purpose of the Aptitude Test, as part of the APEL assessment, is to cater for Numerical literacy, Language and General Knowledge & Critical Thinking of the candidate.



Structure of aptitude test (T6)

Competency Level : SPM



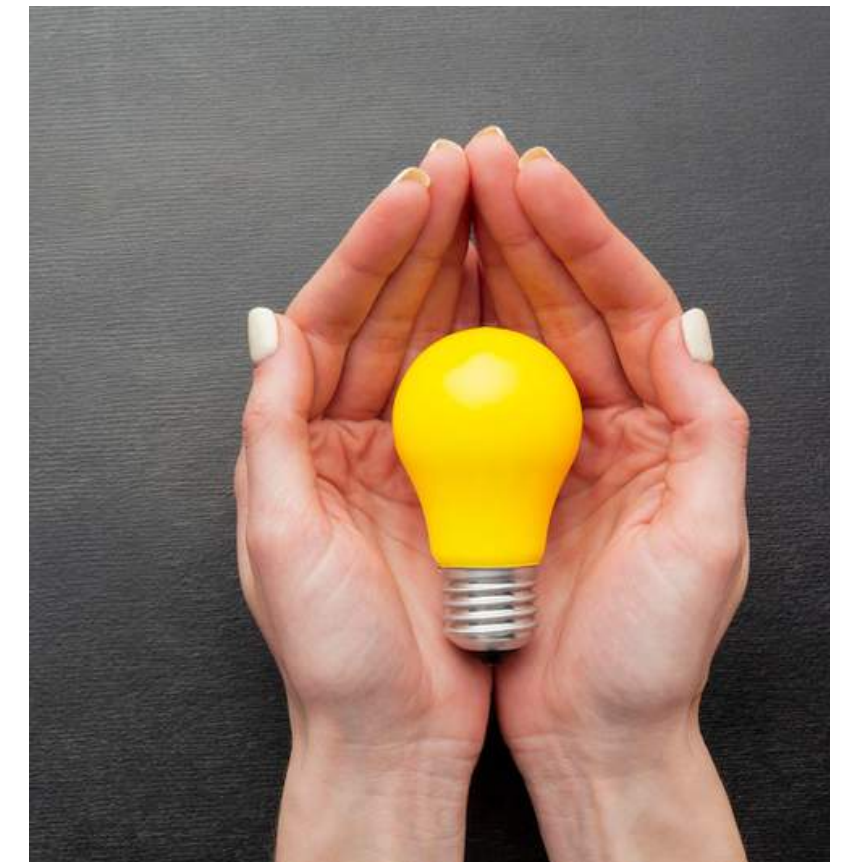
Mathematics



Bahasa Malaysia



English Language



General Knowledge
/Critical Thinking

*All questions for T6 Aptitude Test are objective questions



Portfolio Submission

- Portfolio will help assessors to visualise and evaluate **competences** acquired by the candidate either through informal or non-formal learning.
- Other forms of assessment shall be carried out in the form of interviews, presentations, demonstrations if the committee is uncertain with the evidence presented in the portfolio.

Evidence submitted can be in these forms:

01

CERTIFICATE

School certificates, Statements of results, Short Courses completed at work

02

WORK SAMPLES

Drawings, photographs, reports, written materials, projects, objects, work of arts

03

RECORDS OF WORK PLACE ACTIVITIES

Notes, emails, contracts, completed worksheets, workplace agreement

04

WRITTEN RECORDS

Diaries, records, journals, articles

05

E-MAIL

Work activities, Written skills, Customer feedback

06

SUPPORTING LETTERS

Employers, Community groups, People you have worked with (paid and unpaid work)

07

DOCUMENTS

Media articles, Meritorious awards

Interview

T7 candidates (who have passed the Aptitude Test and Portfolio components), will be contacted for the Interview Session (the final assessment component).



Sample of APEL.A Certificate

The APEL.A certificate will be issued by MQA once candidates have passed all the assessments.





APEL Unit
Centre for Lifelong
Education and
Learning Innovation



03-8312 5509/5257



lle@mmu.edu.my

**HOW DO I
FIND OUT
MORE ABOUT
APEL.A?**

